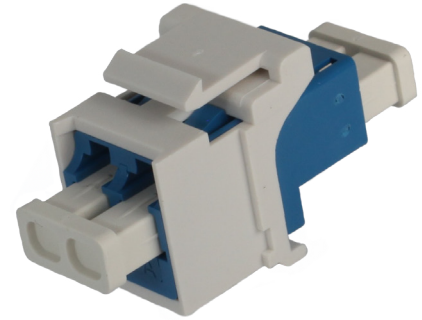


LC OS2/OS1 Duplex Singlemode Keystone Adapter

Part Number: FK-FD08-WH

Features

- Meets IEC61754-20 • IEC61754-4 & TIA/EIA-604-10 Standards
- Economical in both design and termination process
- Snap-in connector design
- Precision mechanical dimensions
- Reduce assembly time and simplifies training
- Reduces maintenance and creates consistent optical performance
- Stabile performance



Specifications

Adapter Type	LC Duplex
Parameter	Singlemode
Insertion Loss	≤0.20dB Typical
Operating Temperature	-40°C ~ 80°C
Storage Temperature	-40°C ~ 80°C
Adapter Color	White
Housing Color	Blue

Applications

- Telecommunication Networks
- Data Communication Networks
- CATV Networks
- Active Device Termination
- Instrumentation

