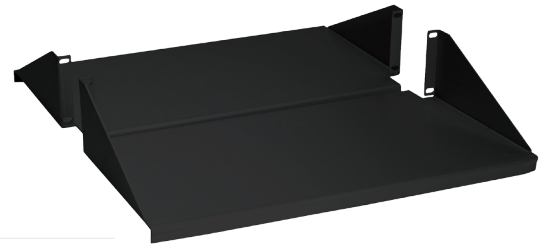


# Heavy Capacity Shelf, 19"W x 20"D x 2U

Part Number: SH-1920



## Dimensions

Height	101.6 mm   4.00 in
Width	488.95 mm   19.25 in
Depth	508.0 mm   20.0 in

## Construction Materials

Material Type	CSR Steel
---------------	-----------

## Specification

Made in U.S.A.	
----------------	--

## General Specification

Dimensional Standards	EIA-310-D
Product Type	Shelf
Package, Quantity	1
Rack Type	EIA 19 in
Includes	Four #12-24 X 1/2 in Screws   One Shelf Four #10-32 X 1/2 in Screws
Rack Units	2
Color	Black
Nominal Shipping Weight	5.44 kg   12.0 lbs.

## Mechanical Specifications

Finish	Black Satin Industrial Coating
Material Gauge	16AWG Steel
Static Load Rating	90.71 kg   200.0 lb